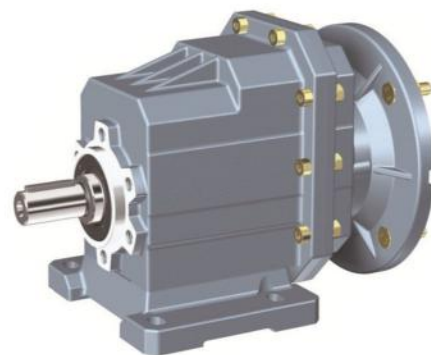


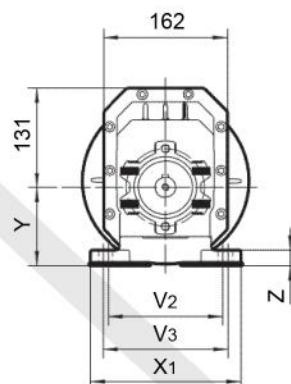
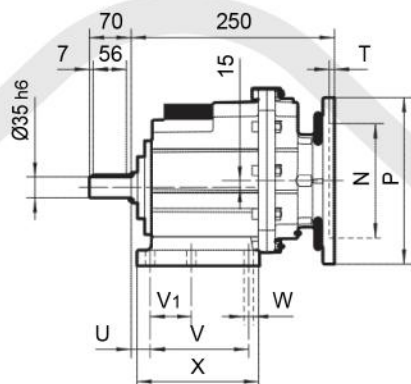
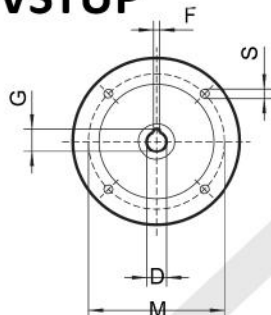
HG ČELNÁ PREVODOVKA HG 04

Rozmerové výkresy



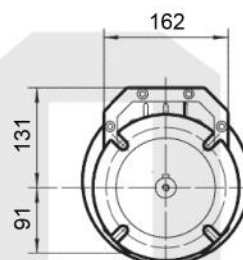
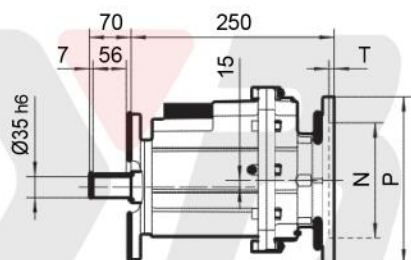
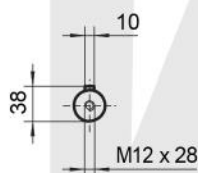
HG04..P(IEC)

VSTUP



HGF04..P(IEC)

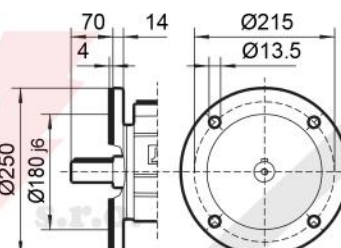
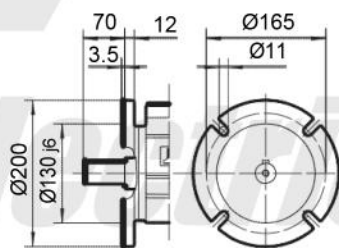
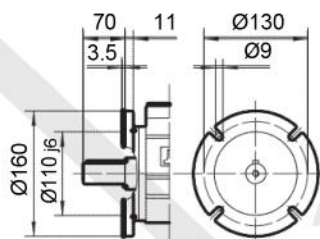
VÝSTUP



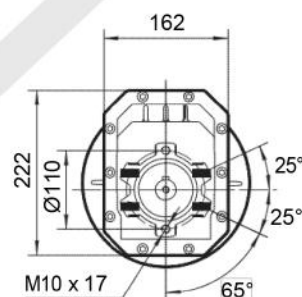
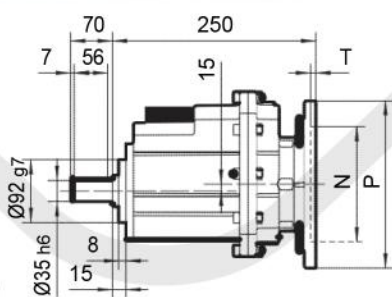
Ø160

Ø200

Ø250



HGZ04..P(IEC)



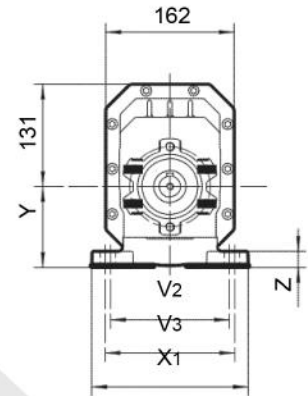
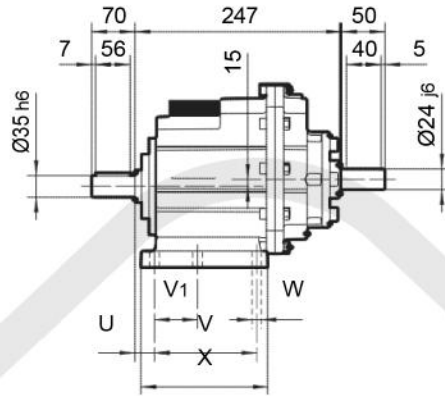
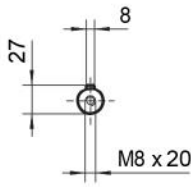
IEC	D	F	G	P	M	N	S	T
80B5	19	6	21.8	200	165	130	11	5
80B14	19	6	21.8	120	100	80	7	5
90B5	24	8	27.3	200	165	130	11	5
90B14	24	8	27.3	140	115	95	9	5
100/112B5	28	8	31.3	250	215	180	13.5	5
100/112B14	28	8	31.3	160	130	110	9	5

Kód pátky	U	V	V1	V2	V3	W	X	X1	Y	Z
B04	23.5	130	—	170	—	14	168	205	115	20
B05	19.5	149.5	—	180	—	14	185	215	130	20
M04	35	110	—	170	185	14	150	230	120	20
M03	33	100	—	135	150	11	150	190	120	18
B03	21	130	70	—	160	11	156	190	120	20



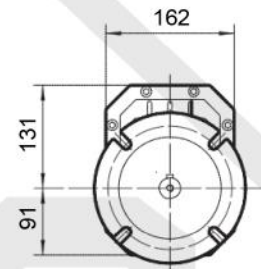
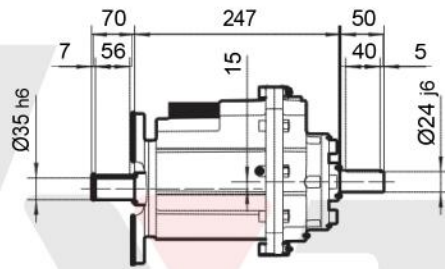
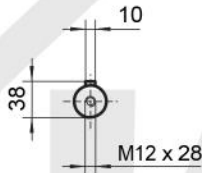
HG04..HS

VSTUP

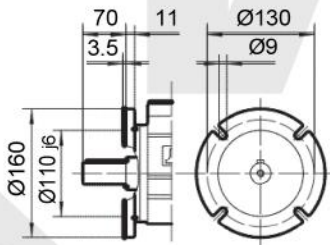


HGF04..HS

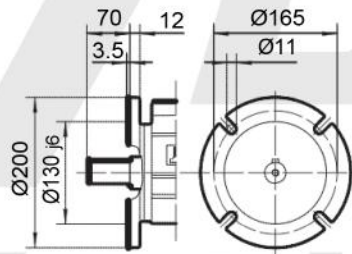
VÝSTUP



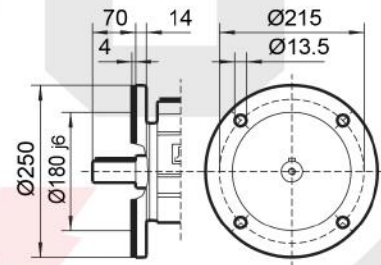
I
Ø160



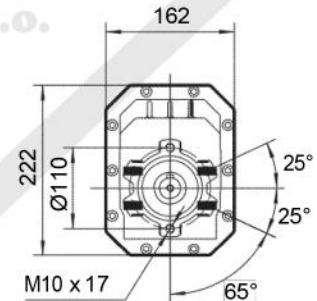
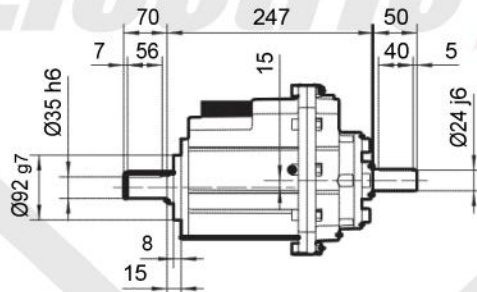
II
Ø200



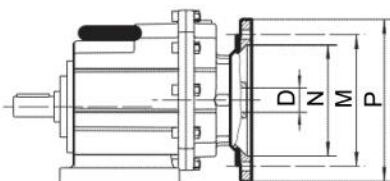
III
Ø250



HGZ04..HS



Kód pátky	U	V	V1	V2	V3	W	X	X1	Y	Z
B04	23.5	130	—	170	—	14	168	205	115	20
B05	19.5	149.5	—	180	—	14	185	215	130	20
M04	35	110	—	170	185	14	150	230	120	20
M03	33	100	—	135	150	11	150	190	120	18
B03	21	130	70	—	160	11	156	190	120	20

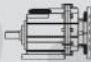
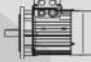


IEC	63B5	71B5	71B14	80B5	80B14	90B5	90B14	100B5	100B14	112B5	112B14
D _{E8}	11	14	19	24	28	28	28	28	28	28	28
P	140	160	105	200	140	200	140	250	160	250	160
M	115	130	85	165	115	165	115	215	130	215	130
N	95	110	70	130	95	130	95	180	110	180	110

Prevodové pomery a vstup pre elektromotor

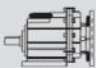
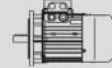
HG..04..P(IEC)				
i	80B5	90B5	100B5	112B5
	80B14	90B14	100B14	112B14
51.30*				
44.18*				
38.63				
34.20*				
30.57				
24.99				
21.15*				
19.24*				
18.21*				
15.30*				
13.30*				
12.60				
10.93*				
9.08				
7.93*				
6.31				
5.48				
4.50				
3.74				

Tabuľka výberu prevodovky

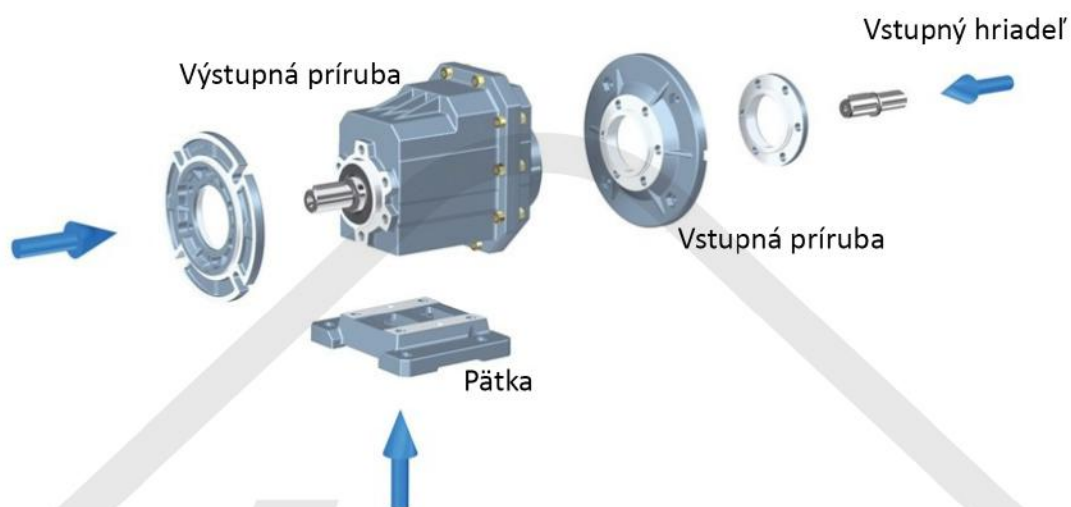
P_{1n} [kW]	n_2 [r/min]	M_{2n} [Nm]	i	fs				
0.75	17.5	392	51.30*	1.3	HG04	90B5/B14	90B5/B14	
	20.4	338	44.18*	1.5	HGF04	90B5/B14	90B5/B14	
	23.3	295	38.63	1.7	HGZ04	90B5/B14	90B5/B14	
	26.3	261	34.20*	1.8				
	29.4	234	30.57	2.1				
	27.3	252	51.30*	2.0	HG04	80B5/B14	80B5/B14	
	31.7	217	44.18*	2.3	HGF04	80B5/B14	80B5/B14	
	36.2	190	38.63	2.6	HGZ04	80B5/B14	80B5/B14	
	40.9	168	34.20*	2.9				
	45.8	150	30.57	3.2				
	56.0	123	24.99	3.9				
	66.2	104	21.15*	4.0				
	1.1	27.3	370	51.30*	1.4	HG04	90B5/B14	90B5/B14
		31.7	318	44.18*	1.6	HGF04	90B5/B14	90B5/B14
36.2		278	38.63	1.8	HGZ04	90B5/B14	90B5/B14	
40.9		246	34.20*	1.9				
45.8		220	30.57	2.2				
56.0		180	24.99	2.7				
66.2		152	21.15*	2.8				
72.8		139	19.24*	3.0				
76.9		131	18.21*	3.2				
91.5		110	15.30*	3.8				
105		96	13.30*	3.7				
1.5	26.3	523	34.20*	0.92	HG04	100B5/B14	100B5/B14	
	29.4	467	30.57	1.0	HGF04	100B5/B14	100B5/B14	
	36.0	382	24.99	1.3	HGZ04	100B5/B14	100B5/B14	
	27.3	504	51.30*	1.0	HG04	90B5/B14	90B5/B14	
	31.7	434	44.18*	1.2	HGF04	90B5/B14	90B5/B14	
	36.2	379	38.63	1.3	HGZ04	90B5/B14	90B5/B14	
	40.9	336	34.20*	1.4				
	45.8	300	30.57	1.6				
	56.0	245	24.99	2.0				
	66.2	208	21.15*	2.0				
	72.8	189	19.24*	2.2				
	76.9	179	18.21*	2.3				
	91.5	150	15.30*	2.8				
	105	131	13.30*	2.7				
	111	124	12.60	2.8				
	128	107	10.93*	2.6				
	154	89	9.08	3.1				
	177	78	7.93*	3.3				



Tabuľka výberu prevodovky

P_{1n} [kW]	n_2 [r/min]	M_{2n} [Nm]	i	f_s			
2.2	36.0	560	24.99	0.86	HG04	112B5/B14	112B5/B14
	42.6	474	21.15*	0.9	HGF04	112B5/B14	112B5/B14
	46.8	431	19.24*	1.0	HGZ04	112B5/B14	112B5/B14
	49.4	408	18.21*	1.0			
	40.9	493	34.20*	1.0	HG04	100B5/B14	100B5/B14
	45.8	440	30.57	1.1	HGF04	100B5/B14	100B5/B14
	56.0	360	24.99	1.3	HGZ04	100B5/B14	100B5/B14
	66.2	305	21.15*	1.4			
	72.8	277	19.24*	1.5			
	76.9	262	18.21*	1.6			
	91.5	220	15.30*	1.9			
	105	192	13.30*	1.8			
	111	182	12.60	1.9			
	128	157	10.93*	1.8			
	154	131	9.08	2.1			
	177	114	7.93*	2.3			
	222	91	6.31	2.9			
	255	79	5.48	2.9			
	311	65	4.50	3.5			
374	54	3.74	4.3				
3	45.8	601	30.57	0.80	HG04	100B5/B14	100B5/B14
	56.0	491	24.99	1.0	HGF04	100B5/B14	100B5/B14
	66.2	416	21.15*	1.0	HGZ04	100B5/B14	100B5/B14
	72.8	378	19.24*	1.1			
	76.9	358	18.21*	1.2	HG04	100B5/B14	100B5/B14
	91.5	301	15.30*	1.4	HGF04	100B5/B14	100B5/B14
	105	261	13.30*	1.3	HGZ04	100B5/B14	100B5/B14
	111	248	12.60	1.4			
	128	215	10.93*	1.3			
	154	178	9.08	1.6			
	177	156	7.93*	1.7			
	222	124	6.31	2.1			
	255	108	5.48	2.1			
	311	88	4.50	2.6			
	374	73	3.74	3.1			
	308	89	9.08	3.1	HG04	100B5/B14	100B5/B14
	353	78	7.93*	3.3	HGF04	100B5/B14	100B5/B14
	444	62	6.31	4.2	HGZ04	100B5/B14	100B5/B14
	511	54	5.48	4.3			
4	105	348	13.30*	1.0	HG04	112B5/B14	112B5/B14
	111	330	12.60	1.1	HGF04	112B5/B14	112B5/B14
	128	286	10.93*	1.0	HGZ04	112B5/B14	112B5/B14
	154	238	9.08	1.2			
	177	208	7.93*	1.3			
	222	165	6.31	1.6			
	255	144	5.48	1.6			
	311	118	4.50	2.0			
	374	98	3.74	2.3			
	308	119	9.08	2.4	HG04	112B5/B14	112B5/B14
	353	104	7.93*	2.5	HGF04	112B5/B14	112B5/B14
	444	83	6.31	3.1	HGZ04	112B5/B14	112B5/B14
	511	72	5.48	3.2			
	622	59	4.50	3.9			

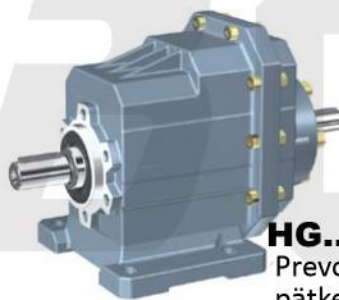
Štruktúra prevodovky



Modely



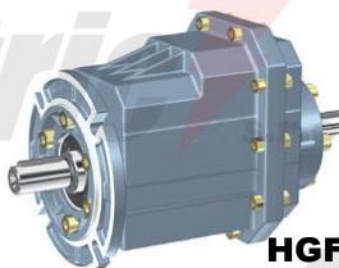
HG..P(IEC)
Prevodovka
s upevnením na pätku



HG..HS
Prevodovka s upevnením na
pätku a vstupom na hriadeľ



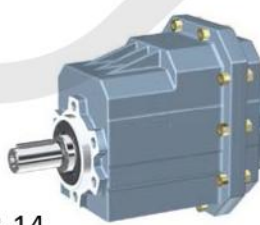
HGF..P(IEC)
Prevodovka s prírubou



HGF..HS
Prevodovka s prírubou a
vstupom na hriadeľ

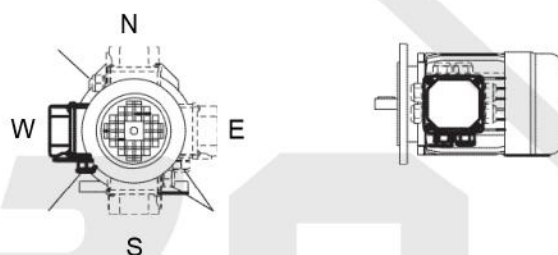
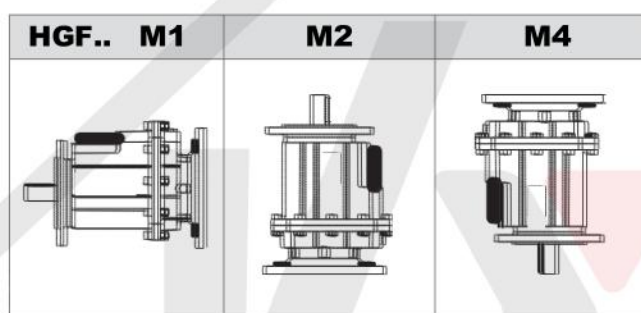
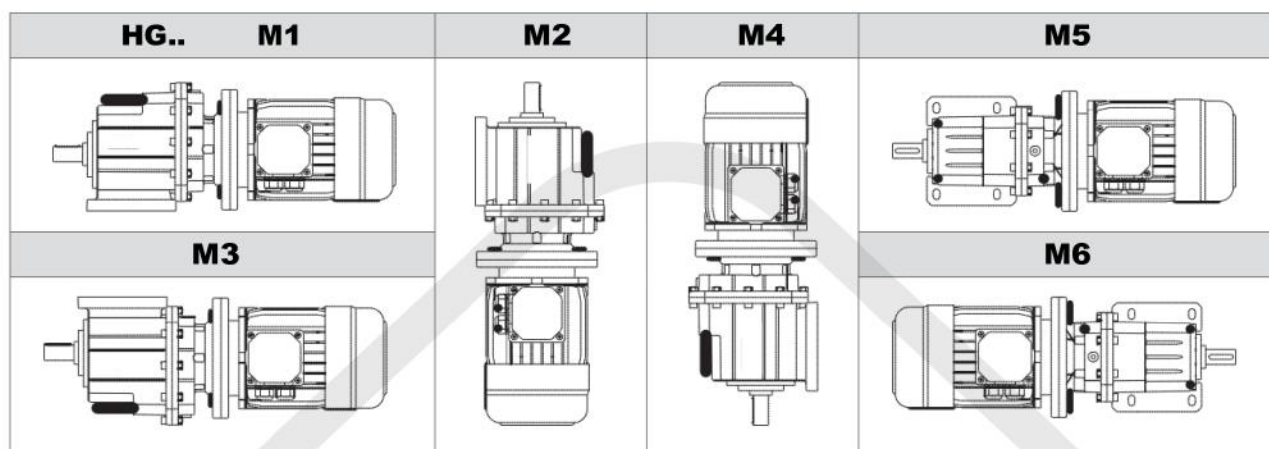


HGZ..P(IEC)
Prevodovka s prírubou B-14



HGZ..HS
Prevodovka s prírubou B-14
a vstupom na hriadeľ

Montážna poloha a orientácia svorkovnice



Mazanie

						TYP MAZANIA
HG..	标准 Standard -10 +40	VG 220	Shell Omala 220	Mobilgear 630	BP GR-XP 220 BP Energol	Minerálny olej
	-20 +25	VG 150 VG 100	Shell Omala 100	Mobilgear 627	BP Energol GR-XP 100	
	-30 +10	VG 68-46 VG 32	Shell Tellus T 32	Mobil D.T.E. 13M		
	-40 -20	VG 22 VG 15	Shell Tellus T 15	Mobil D.T.E. 11M	BP Energol HLP-HM 15	
	-40 +80	VG 220	Shell Omala HD 220	Mobil SHC 630		Syntetický olej
	-40 +40	VG 150	Shell Omala HD 150	Mobil SHC 629		
	-40 +10	VG 32		Mobil SHC 624		